



Leica Instrument Explorer

*for
Pocket PCs*

Leica Geosystems AG

Introduction & User's Guide

Copyright © 2001 Leica Geosystems AG

Leica Geosystems AG
CH-9435 Heerbrugg
(Switzerland)
www.leica-geosystems.com

Table of Contents

1.	Introduction	1
2.	Getting started	1
2.1	Installing Leica Instrument Explorer on your Pocket PC	1
2.2	Overview	2
2.2.1	Start data exchange	3
2.2.2	Define communication settings	3
2.3	Files Management	4
2.3.1	Create a new folder	4
2.3.2	Copy a file	5
2.3.3	Delete a file	6
2.3.4	View the contents of a file	6
2.3.5	Rename a file or folder	7
2.4	Using Leica Editor	7
2.4.1	Create a new document	8
2.4.2	Open a file	8
2.4.3	Save a new, unnamed document	9
2.4.4	Save a copy of a file	9
2.4.5	Exit Leica Editor	9
2.4.6	Cut data	9
2.4.7	Copy data	10
2.4.8	Paste data	10



Leica Instrument Explorer

*for
Pocket PCs*

2.4.9	Locating specific data position in a file	11
3.	Working with File Transfer Protocol (FTP)	11
3.1	Brief Description of FTP	11
3.2	Define FTP settings	12
3.3	Free Server Space	13
4.	Technical Details	13
4.1	List of supported processors	13
4.2	List of supported Leica instruments	13

1. Introduction

Leica Instrument Explorer provides a convenient way to transfer data from a TPS300/700 instrument to the Pocket PC or vice versa. You can exchange information between the desktop computer and your Pocket PC after setting up a communication between them. The additional feature *File Transfer Protocol* (FTP) serves as an alternative to exchange files between the desktop computer with remote access and Pocket PC on the Internet.



2. Getting started

2.1 Installing Leica Instrument Explorer on your Pocket PC

1. Connect your Pocket PC to your host desktop or laptop via the serial, IR, USB, network connection or wireless radio technologies.
2. Once communication has been established, copy the files **Leica Instrument Explorer.exe** and **Leica Editor.exe** to the directory **Windows \ Start Menu** in the Pocket PC.

Note: Ensure you are using a processor that is being supported. To see the list of supported processors, go to page 13, Section 4.1.

2.2 Overview

Leica Instrument Explorer has a user interface designed to make the exchange of data as easy as possible. The interface comprises of a tree view (window), which shows all items under the three roots (Port1:, FTP and MyComputer) in an easy to read manner as illustrated below:

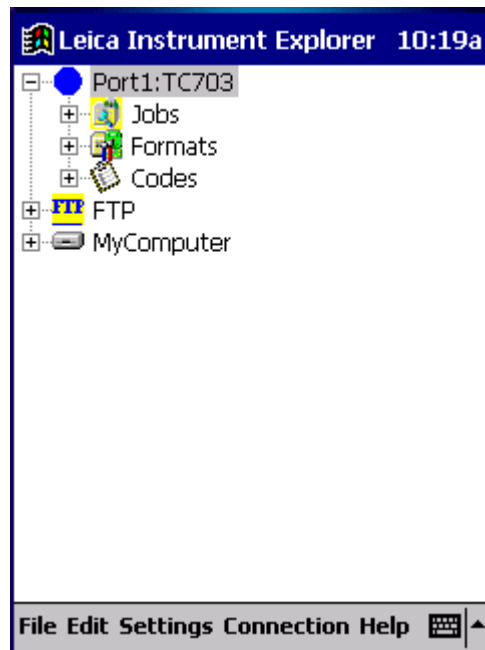




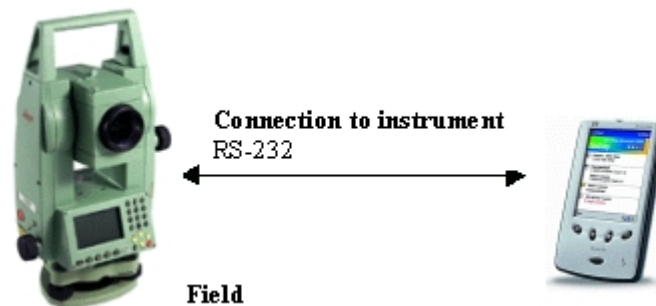
Figure 2.2a

You can either expand or collapse individual items, branches or roots by simply tapping  /  next to the item on the tree.

2.2.1 Start data exchange

Ensure the following to obtain a successful data exchange between the instrument and Pocket PC:

- The instrument is connected to the Pocket PC.
- The communication settings for the selected serial port match the communication parameters set in the connected instrument.



2.2.2 Define communication settings

Communication settings for the serial port can be specified in Leica Instrument Explorer. To do so, proceed as follows:

1. Select the menu command **Communication settings...**, **Settings**.
2. On the **COM Settings** dialog as illustrated in Figure 2.2.2a, in the **COM port** box, select the name of the port.
3. Set the **Baud Rate**, **Parity**, **Data bits**, **Stop bits** and **End** to match the communications parameters set in the instrument connected to the port.
4. Select **ok** on the top right of the display to define.

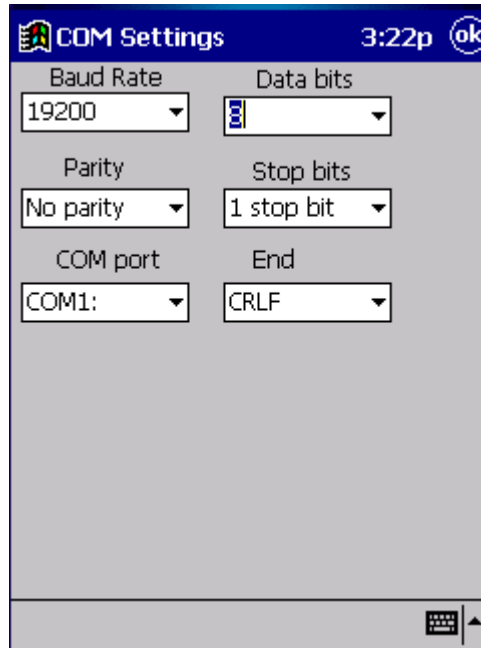


Figure 2.2.2a

2.3 Files Management

Besides exchanging data, you can also create, copy, delete, view or rename a folder or file in Leica Instrument Explorer simply by tapping the appropriate command on the menu bar located at the bottom of the window.

2.3.1 Create a new folder

To create a new folder as illustrated in Figure 2.3.1a, proceed as follows:

1. Click the folder or root where you want the new folder to be located.
2. Select the menu command **File, New Folder**.
3. Type a name for the folder.
4. Tap the screen to complete task.

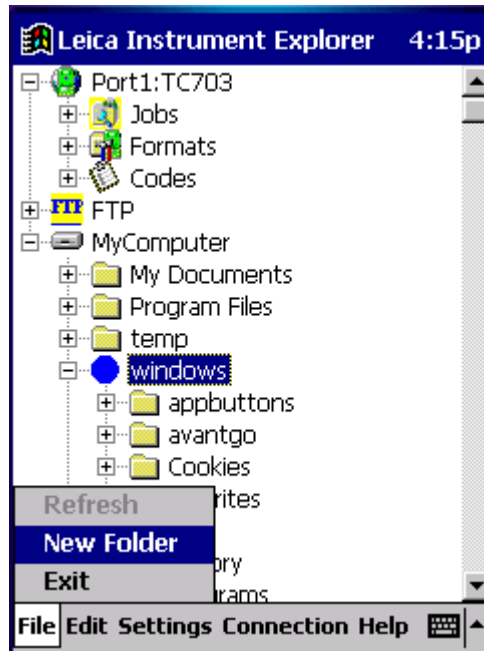


Figure 2.3.1a

2.3.2 Copy a file

To copy a file as illustrated in Figure 2.3.2a, proceed as follows:

1. Select the file you want to copy.
2. Select the menu command **Edit, Copy**.
3. Select the 'destination' where you want the file to be at.
4. Select the menu command **Edit, Paste**. The file is now copied to the target location.

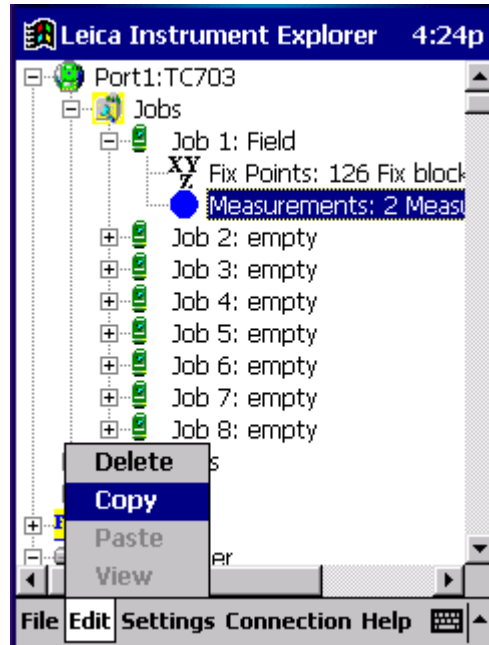


Figure 2.3.2a

2.3.3 Delete a file

To delete a file (refer to Figure 2.3.2a), proceed as follows:

1. Select the file you want to delete.
2. Select the menu command **Edit, Delete**.

2.3.4 View the contents of a file

To view the contents of a file (refer to Figure 2.3.2a), proceed as follows:

1. Select the file whose contents you want to view.
2. Select the menu command **Edit, View**.
3. The contents are presented in Leica Editor.

Note: Contents of files listed in the root *Port1*: **cannot** be viewed.

2.3.5 Rename a file or folder

To rename a file or folder, proceed as follows:

1. Select the file or folder you want to rename.
2. Tap the selected file or folder **ONCE**.
3. Begin to type a new name.
4. Tap the screen to complete.

2.4 Using Leica Editor

Coordinate files, Codelists, measurement files, for example, when downloaded from the instrument are presented in Leica Editor when you select to view the file. For example, Figure 2.4a shows a GSI-format file in Leica Editor when selected for view. In addition to opening and saving files, you can also move, copy data or select the position of the file you want to view.

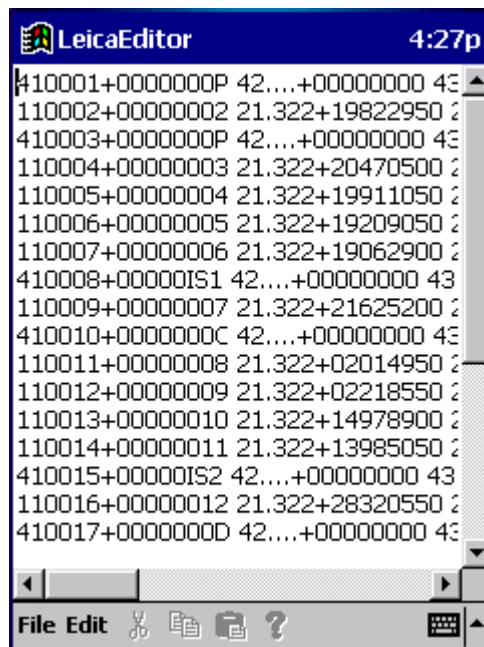


Figure 2.4a

2.4.1 Create a new document

To create a new document in Leica Editor as illustrated in Figure 2.4.1a, simply select the menu command **File, New**.

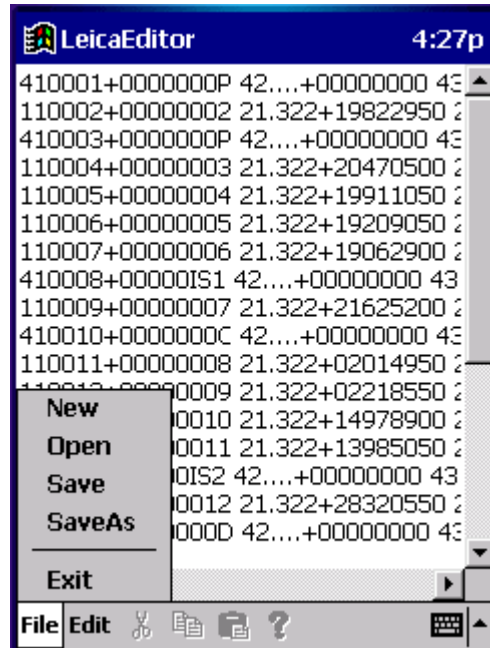


Figure 2.4.1a

2.4.2 Open a file

To open a file (refer to Figure 2.4.1a), proceed as follows:

1. Select the menu command **File, Open**.
2. In the **Folder** box, select the folder, which contains the file you want to open.
3. In the list box, tap the file you want to open

To abort the function, simply tap **Cancel**.

2.4.3 Save a new, unnamed document

To save a new, unnamed document (refer to Figure 2.4.1a), proceed as follows:

1. Select the menu command **File, Save**.
2. In the **Name** box, type a name for the file.
3. In the **Folder** box, box, select the folder you want to save the file in.
4. Tap **OK** to save or **Cancel** to abort function.

2.4.4 Save a copy of a file

To save a file with a different name (refer to Figure 2.4.1a), proceed as follows:

1. Select the menu command **File, SaveAs**.
2. In the **Name** box, type a new name for the file.
3. In the **Folder** box, box, select the folder you want to save the file in.
4. Tap **OK** to save or **Cancel** to abort function.

2.4.5 Exit Leica Editor

You **should** select the menu command **File, Exit** to exit Leica Editor in order to enter the Leica Instrument Explorer program. (Refer to Figure 2.4.1a)

2.4.6 Cut data

To move data in a file as illustrated in Figure 2.4.6a, proceed as follows:

1. Highlight the contents you want to move.
2. Select the menu command **Edit, Cut**.

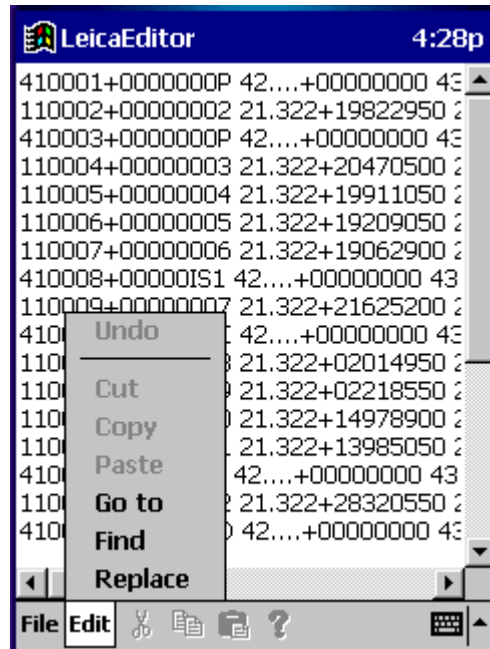


Figure 2.4.6a

2.4.7 Copy data

To copy data in a file (refer to Figure 2.4.6a), proceed as follows:

1. Highlight the contents you want to copy.
2. Select the menu command **Edit, Copy**.

2.4.8 Paste data

To copy data in a file (refer to Figure 2.4.6a), proceed as follows:

1. Position the cursor to where you want to insert the cut/copied data.
2. Select the menu command **Edit, Paste**.

2.4.9 Locating specific data position in a file

To select the position of the file you want to view (refer to Figure 2.4.6a), proceed as follows:

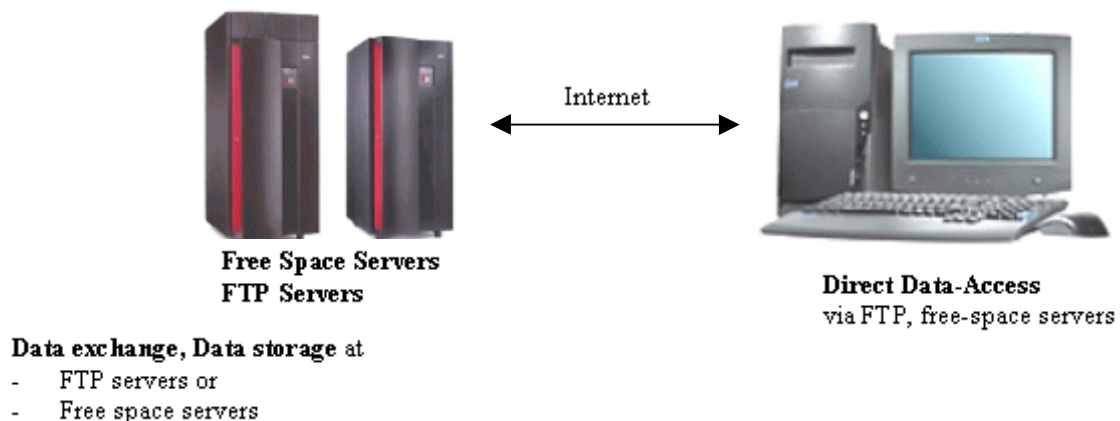
1. Select the menu command **Edit, Go to**.
2. In the **Line** box, enter the position of the file you want to view. For example, if you want to view the third line of the file, enter 3 in the **Line** box.
3. Tap **Go To** to complete task or **Cancel** to abort function.

3. Working with File Transfer Protocol (FTP)

3.1 Brief Description of FTP

FTP, an acronym for File Transfer Protocol, is a method of transferring files between computers on the Internet. With FTP, you can copy files (Coordinate files, Formats, Codelists) from a remote computer to your Pocket PC (downloading), which in turn, you can transfer to your instrument or vice versa (uploading). When browsing the Web, you may occasionally encounter an address with the prefix **ftp://**, which indicates an FTP address. The address points to an FTP site rather than a Web site. Because it was designed specifically for file transfer, FTP is the preferred way to send large files (say, over a megabyte in size).

Using FTP provided in Leica Instrument Explorer, you can now connect to your office FTP server anytime.



3.2 Define FTP settings

In order to connect to the FTP server, for which you have an account, the following information is required:

- **Address** of the FTP server,
- **User Name/ID** for your account and
- **Password** for your User Name/ID.

Once you have the above information, you are ready to use FTP provided in Leica Instrument Explorer. To do so, proceed as follows:

1. Select the menu command **FTP settings..., Settings**.
2. On the **FTP Settings** dialog as illustrated in Figure 3.2a, in the **Ftp server** box, type the address of the FTP site. For example, to connect to xxx's FTP site, enter **ftp.xxx.com**.
3. Enter your user name/id and password, which you have obtained from your FTP server provider, in the **User** and **Password** box respectively.
4. Select **ok** on the top right of the display to define.

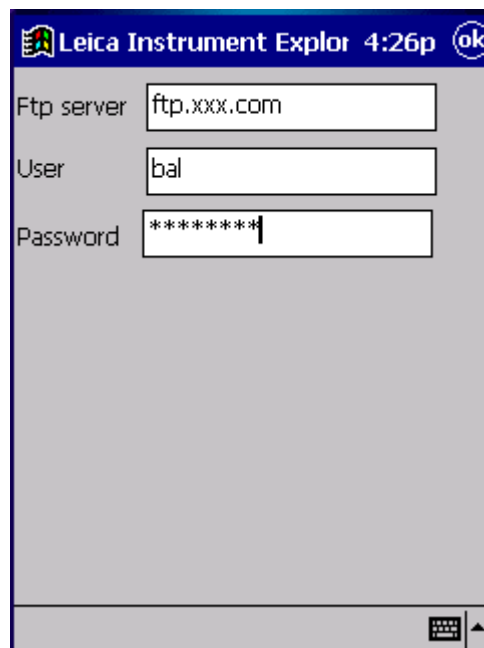


Figure 3.2a

3.3 Free Server Space

Over the Internet, you can obtain *free* server space provided by some server space providers on a server for storage and transferring of files. The amount of *free* space may be limited by the providers though.

4. Technical Details

4.1 List of supported processors

Supported processors include the followings:

- ARM Processor (Compaq iPAQ)
- MIPS Processor (Casio)
- SH3 Processor (HP Jornada)

4.2 List of supported Leica instruments

Leica Instrument Explorer **only** works with the following Leica instruments:

- TPS300
- TPS700



Leica Instrument Explorer

*for
Pocket PCs*

Disclaimer:

Leica Geosystems Software License Agreement

This agreement is a legal agreement between you, the Customer, and Leica Geosystems AG, 9435 Heerbrugg, Switzerland ("Leica Geosystems"). By opening the package or installation of the Software you agree to the terms and conditions of this Agreement. If you do not agree to the terms and conditions, you must return the package and all other accompanying items (manuals, documents, packing etc.) to the Leica Geosystems representative from whom you obtained them or to Leica Geosystems.

Leica Geosystems Software License

1. Grant of Rights

Subject to all terms and conditions of this Agreement, Leica Geosystems agrees to grant and Customers agrees to accept a non-exclusive non-transferable license to use the Software. This Agreement also applies to updates and releases, if any, provided by Leica Geosystems at its sole discretion.

2. License Fee

The fee of the license in this Agreement is included in the price of the product sold by Leica Geosystems to Customer.

3. Term

The license term continues indefinitely unless terminated for breach of this Agreement by Customer. In the event of such breach Leica Geosystems may at its sole discretion terminate the license. Upon termination, Customer shall:

- a) return all Software and Software-Protection Connectors and Documentation originally supplied to Customer; and
- b) remove all parts of the Software from modification programs or derivative programs created by Customer; and
- c) destroy or deliver to Leica Geosystems all Customer-created copies (whether partial or complete) of the Software.



Leica Instrument Explorer

*for
Pocket PCs*

4. Use of Software and Software-Protection Connectors

If the Software provided under this Agreement is supplied with a Software-Protection Connector, the Software, or those components of the Software that are protected, shall only be used on a computer to which a Software-Protection Connector supplied by Leica Geosystems is attached.

Customer shall ensure that there shall be no modification, reprogramming or circumvention of the Software and/or the Software-Protection Connectors supplied by Leica Geosystems in order that the Software, or those components of the Software that are protected, can be used on a computer to which a Software-Protection Connector supplied by Leica Geosystems is not attached.

Customer shall also ensure that there shall be no modification of the Software in any way without the prior written consent of Leica Geosystems.

Customer shall also not allow a third party to use any of the algorithms contained in the Software or any components of the Software or the Software itself without the prior written consent of Leica Geosystems.

5. Property Rights in Software

Customer has not purchased title to the Software, but rather has the foregoing license to use the Software. Customer has no intellectual property rights (including copyrights) in the Software.

Every Customer-created copy of the Software or any part of it is the property of Leica Geosystems.

6. No Assignment

Customer shall not assign, sub-license, lease or sell any of Customer's rights under this Agreement to a third party without the prior written consent of Leica Geosystems.

7. Remedies

If Customer violates this Agreement, whether or not it is terminated by Leica Geosystems, Leica Geosystems is entitled to all gross income derived by Customer from the violations. Leica Geosystems is also entitled to all damages, attorney's fees and costs incurred by Leica Geosystems in enforcing this Agreement and in prohibiting further use of the Software if this Agreement is terminated.



Leica Instrument Explorer

*for
Pocket PCs*

8. Limited Warranty and Liability

8.1 Leica Geosystems warrants that the Software is an accurate version of the Software as developed. The sole and exclusive responsibility of Leica Geosystems under this warranty is to substitute an accurate version of the Software.

8.2 THE FOREGOING IS IN LIEU OF ALL OTHER WARRANTIES. LEICA GEOSYSTEMS MAKES NO EXPRESS OR IMPLIED WARRANTIES OF QUALITY AND PERFORMANCE. THE SOFTWARE IS LICENSED "AS IS".

8.3 LEICA GEOSYSTEMS CANNOT BE HELD LIABLE FOR INCIDENTAL, INDIRECT, OR CONSEQUENTIAL DAMAGES.

9. Severability

If any provision of this Agreement is held to be invalid, illegal, or unenforceable, the remaining provisions shall continue in full force and effect.

10. Applicable Law

This Agreement is governed by the laws of Switzerland.

11. Venue

11.1 Venue shall be the domicile of Leica Geosystems.

11.2 Leica Geosystems, however, shall have the right to take legal action against the Customer at the domicile of the Customer.